

hospitality design

marketplace fall 2022 hospitalitydesign.com

bright ideas

the product marketplace



hd Presenter of
expo+
conference

hospitality design
fall 2022

the product marketplace

hd vol. 44 no. 7

Presenter of HD Expo, a hospitality design event



5



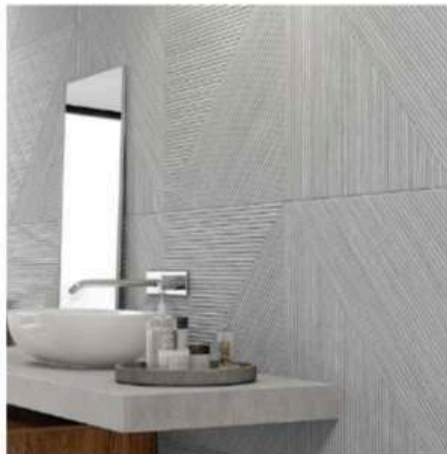
6



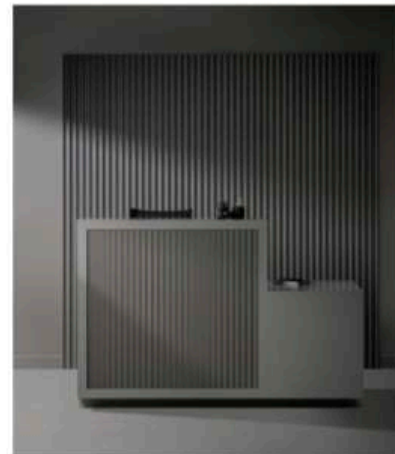
7



8



9



10

5
Living Ceramics' Rem tiles combine a textured surface of parallel lines with a wooden base from the Uno line, creating a crisscross appearance in one of five grayscale colors including Taupe (shown).
LIVINGCERAMICS.COM

6
 To capture its namesake, bark peels from birch trees were scanned then digitally manipulated to create the basis of **Formica's** Birchbark, resulting in an abstract stippled pattern grounded with natural elements.
FORMICA.COM

7
 The Wave collection from **StonePeak** is a porcelain tile range with a concrete look that comes in a sleek patterned option that features Art Nouveau-inspired decos.
STONEPEAKCERAMICS.COM

8
 Microcosmi from **Ceramica Magica** captures the swirling colors formed in natural marble and replicates them across four patterns of porcelain stoneware, including Calacatta Macchia Antica (shown).
CERMAGICA.IT

9
 A 3D linear pattern etched across the porcelain surface of **Tilebar's** Enso creates a ribbed texture emulating the look of wood. The line is offered in three neutral colors: ash, oak beige, and gray (shown).
TILEBAR.COM

10
 Five new patterns join **3form's** Profile collection of modular panels. Inspired by the fluting of ancient Greek columns, they are defined by vertical linework and come in 30 Merino felt colors and 37 finishes.
3-FORM.COM

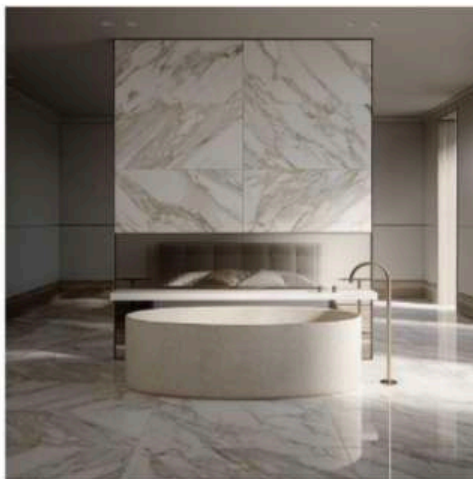
products flooring

Luxurious materials meet fine craftsmanship

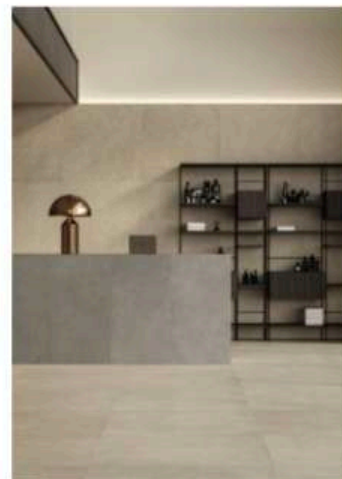
By Kathryn Greene



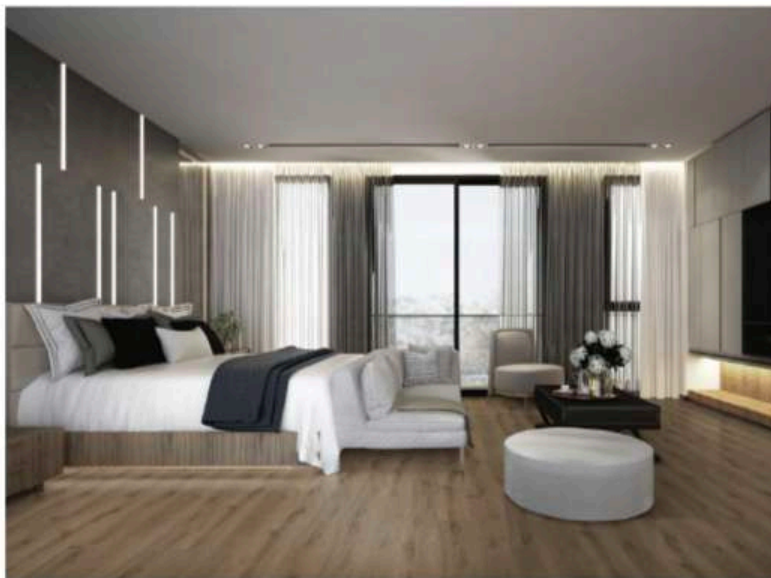
1



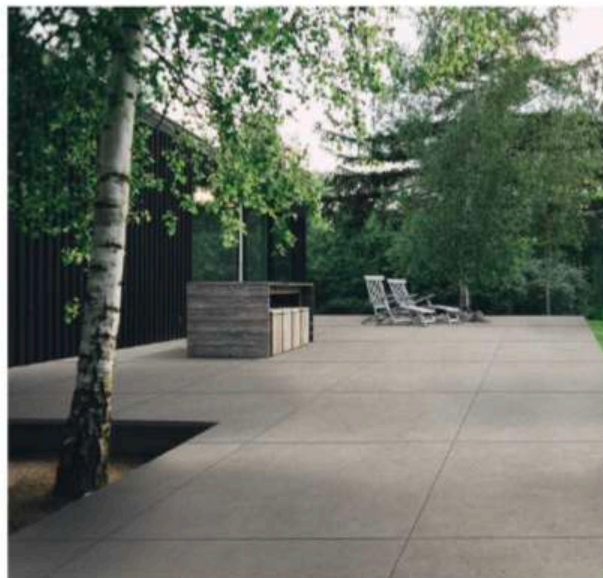
2



3



4



5

1

From **Daltile's** STARE 2.0 line, Kintsugi pays homage to the Japanese art form of repairing broken pottery with powdered gold, silver, or platinum. Here, metallic striations embedded within the concrete tiles create enhanced luminescence. DALTILE.COM

2

Veins of gray, gold, and white flow across the surface of **Saloni's** Avenza, which is offered in gold luxe, gold anticato, and gold matte variations. SALONI.COM

3

Distributed by **Transceramica**, **Porcelaingres'** Stardust is a range of 40x40-inch porcelain tiles grounded by earth-inspired tones, including ocean, clay, and moonlight. TRANSCERAMICA.COM; PORCELAINGRES.COM

4

NuWud's Suited combines the technology from its Elements collection (plastic-free, sustainable, and waterproof) with multiple options for customization. NUSOLUTIONSGROUP.COM

5

Terratinta Ceramiche's Lagom collection of unglazed porcelain stoneware takes a subtle approach, allowing the beauty of the natural stone to shine with a matte finish. TERRATINTA.COM